

Customer :
Project Name :
Project No. :
Revision No. :

SPECIFICATION for INDUCTION MOTOR



0		For Bidding			
No.	DATE	DESCRIPTION	PREPARED BY	CHECKED BY	APPROVED BY

AC INDUCTION MOTOR DATA SHEET

Model No.or RFQ No.		Item No.		Rev. No. []			
Project Name		Project No.		Quantity sets			
GENERAL SPECIFICATION			PERFORMANCE DATA				
Frame Size	180M		Rated Output	15 kW 20.0 HP			
Type	HLP-15/6		Number of Poles	6			
Enclosure(Protection)	Totally Enclosed / IP55		Rotor Type	Squirrel Cage			
Method of Cooling	IC411(FC)		Starting Method*	<input checked="" type="checkbox"/> D.O.L <input type="checkbox"/> Y-Δ			
Rated Frequency	60 Hz		Rated Voltage	220 V			
Number of Phases	3		Current	Full Load	55.8 A		
Insulation Class	<input checked="" type="checkbox"/> F <input type="checkbox"/> B <input type="checkbox"/> H		Locked-rotor**	750 %			
Temp. Rise at full load (by resistance method)			Efficiency				
at 1.0 S.F 80 deg. C							
Motor Location	<input checked="" type="checkbox"/> Indoor <input type="checkbox"/> Outdoor						
Altitude	Less than 1000 meter		100% Load 91.7 %				
Relative Humidity	Less than 80 %		Power Factor(p.u)				
Ambient Temp.	40 deg. C (Max.)						
Duty Type	Continuous (S1)		100% Load 0.770				
Service Factor	1.15		Speed at Full Load 1175 r.p.m				
Mounting	B3		Torque				
Bearing	Type	Anti-Friction					
	DE/N-DE	6310ZZC3 / 6310ZZC3	Full Load	12.4 kg·m 121.9			
	Lubricant	Grease	Locked-rotor**	150 % 18.7 kg·m			
External Thrust	Not applicable		Breakdown**	230 % 28.6 kg·m			
Coupling Method	<input checked="" type="checkbox"/> Direct <input type="checkbox"/> V-Belt		Moment of Inertia (J)				
Shaft Extension	<input checked="" type="checkbox"/> Single <input type="checkbox"/> Double		Load(Max.) 27.355 kg·m ²				
Terminal	Main	<input checked="" type="checkbox"/> Aluminum <input type="checkbox"/> Cast Iron	Motor 0.257 kg·m ²				
Box	Aux.	<input type="checkbox"/> Yes <input type="checkbox"/> No	Sound Pressure Level (No-load & mean value at 1m from motor)				
	Location	Refer to Outline Drawing	65 dB(A)				
Application			Vibration 2.2 mm/sec (peak)				
Area classification	Non-Hazardous		Permissible number of				
Type of Ex-Protection	Not applicable		consecutive starts				
Applicable Standard	KS, IEC, NEMA MG1 Part30(Vpeak)		Cold 20 times				
			Hot 15 times				
			Paint	Munsell No.	PHANTONE 279C		
ACCESSORIES			SUBMITTAL DRAWING				
			Outline Dimension Drawing \ Motor Weight(Approx.)				
			B3 LM-T1183B3PLV01 172 kg				
			REMARK				
			*. Premium efficiency(IE3) acc. to KS C 4202				
			*. SSEN Series				
			*. For use on PWM VFD 10:1VT,3:1CT@1.0S.F&F Temp.rise				
SPARE PARTS			<div style="border: 2px solid red; padding: 20px; text-align: center; font-size: 2em; color: red;">FOR BIDDING</div>				
			Date	DSND	CHKD	CHKD	APPD
			2021-04-29				

Type : HLP-15/6

Full Load Torque : 12.4 kg.m

Load moment of Inertia (J) : - kg.m²

Motor moment of Inertia (J) : 0.257 kg.m²

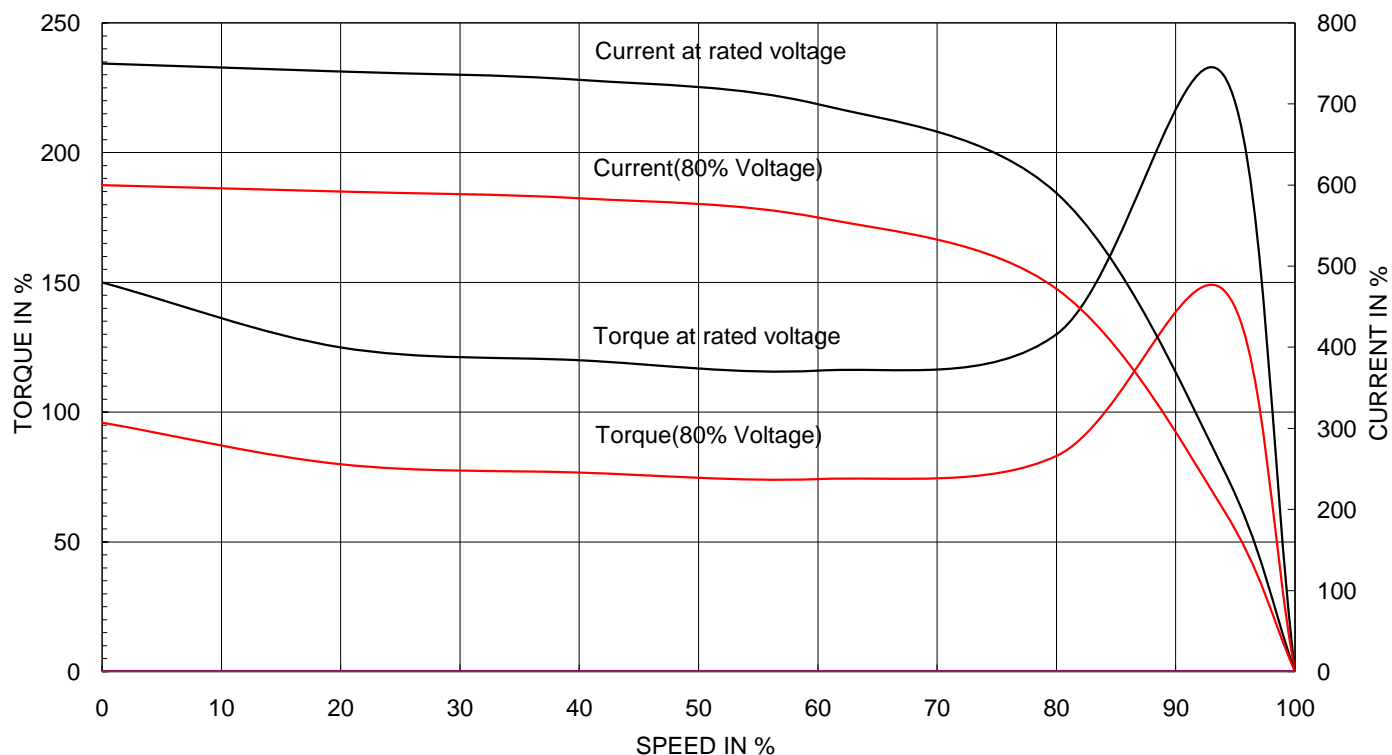
15 kW 6 P 60 Hz

Speed at Full Load : 1175 RPM

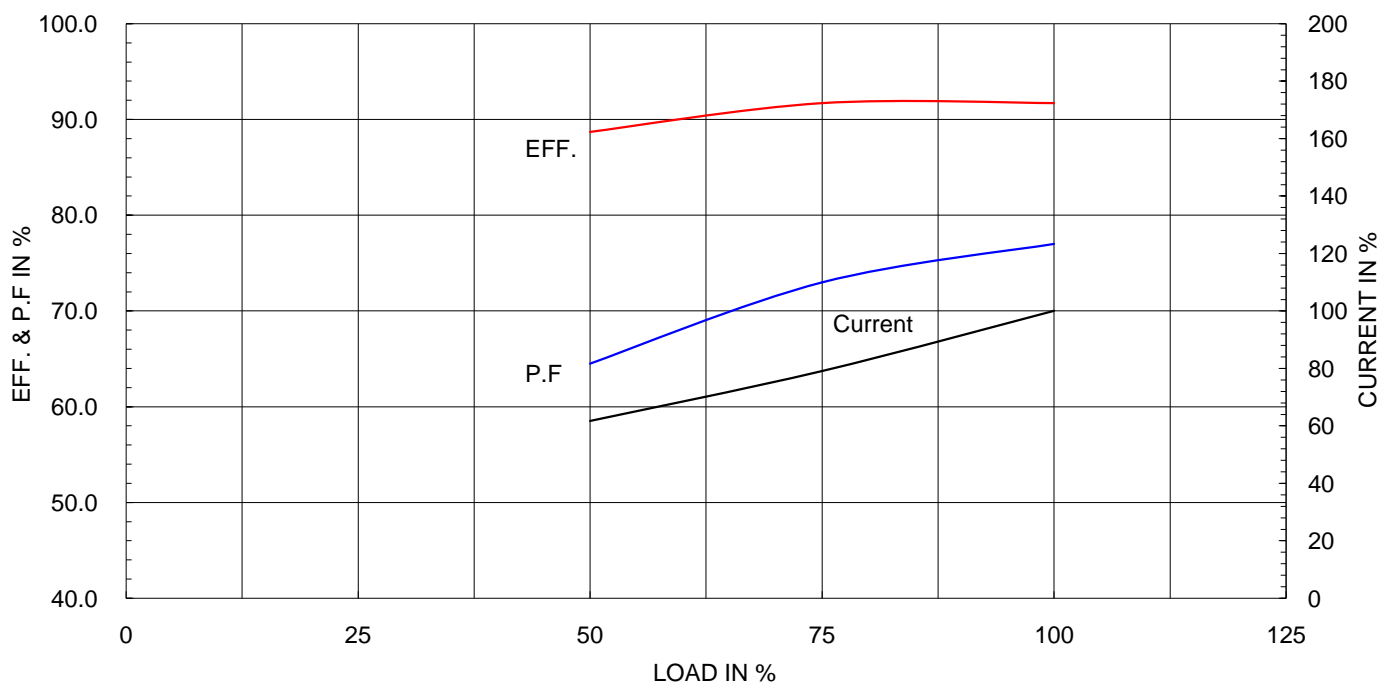
Rated Voltage 220

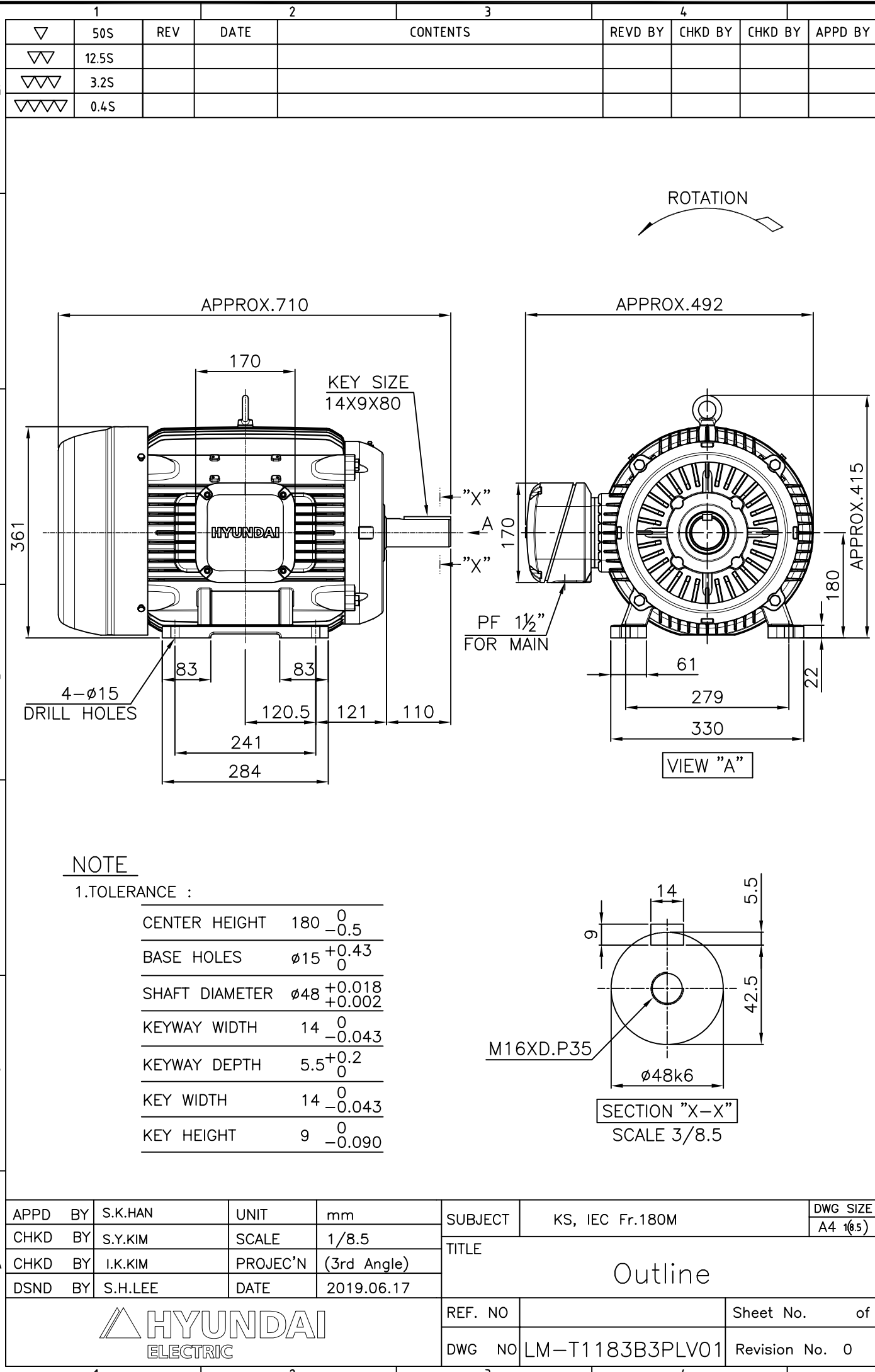
Full Load Current 55.8A

SPEED VS TORQUE & CURRENT CURVE



OUTPUT VS EFF., P.F & CURRENT CURVE



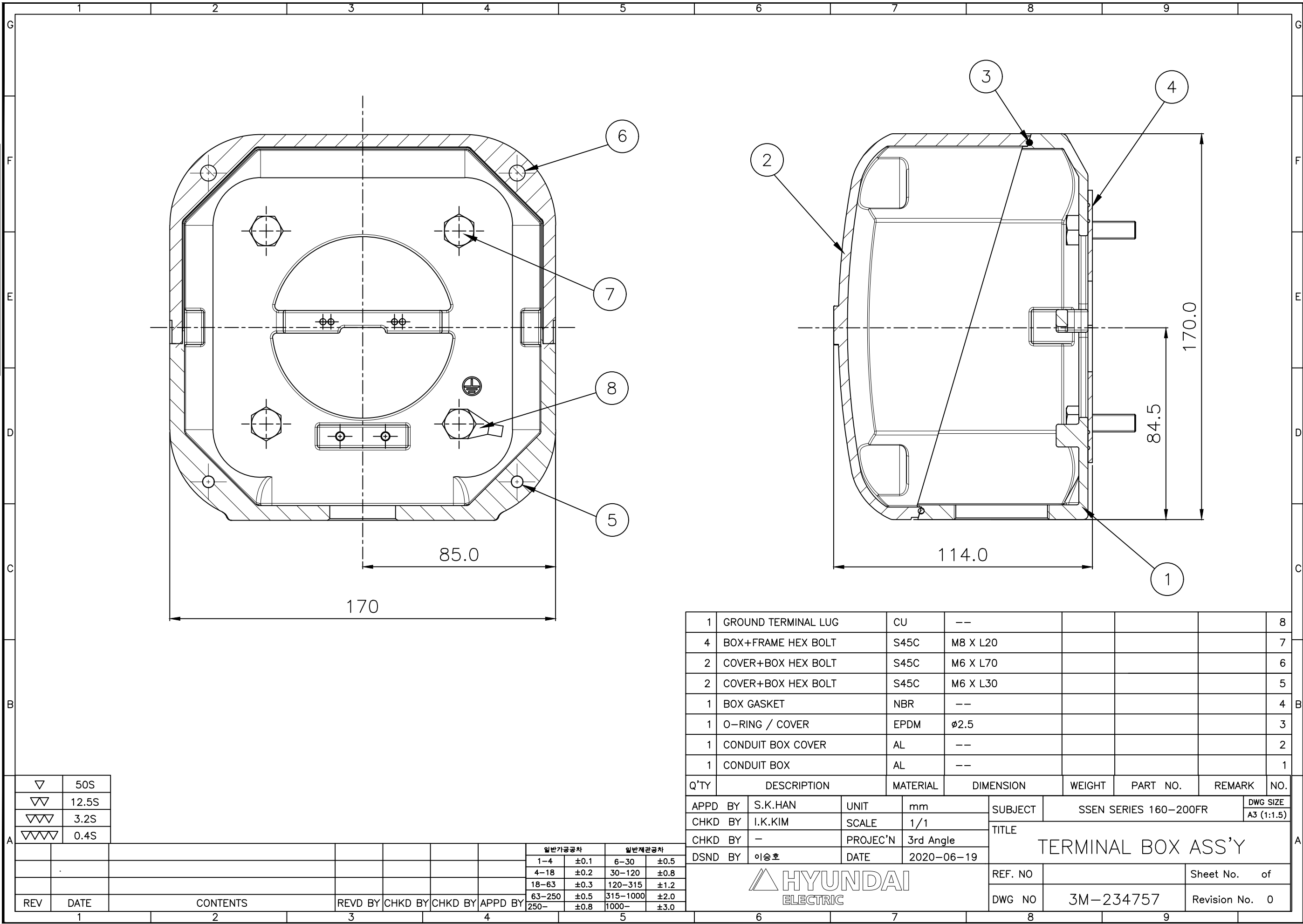


APPD BY	S.K.HAN	UNIT	mm	SUBJECT	KS, IEC Fr.180M	DWG SIZE	A4 (6.5)
CHKD BY	S.Y.KIM	SCALE	1/8.5	TITLE	Outline	Sheet No.	of
CHKD BY	I.K.KIM	PROJEC'N	(3rd Angle)				
DSND BY	S.H.LEE	DATE	2019.06.17				
				REF. NO		Revision No.	0
				DWG NO	LM-T1183B3PLV01		

THIS DRAWING IS PROPRIETARY TO HYUNDAI ELECTRIC. NO PART OF THIS DRAWING
MAYBE REPRODUCED WITHOUT THE PERMISSION OF HYUNDAI ELECTRIC.


본 도면은 현대일렉트릭(주) 재산이므로
허가없이 복사할 수 없음 (취급유의)

HYUNDAI
ELECTRIC



▽	50S
▽▽	12.5S
▽▽▽	3.2S
▽▽▽▽	0.4S

REV	DATE	CONTENTS	REVD BY	CHKD BY	CHKD BY	APPD BY	일반기공차	일반재관공차
							1-4 ±0.1	6-30 ±0.5
							4-18 ±0.2	30-120 ±0.8
							18-63 ±0.3	120-315 ±1.2
							63-250 ±0.5	315-1000 ±2.0
							250- ±0.8	1000- ±3.0

1	GROUND TERMINAL LUG	CU	--				8
4	BOX+FRAME HEX BOLT	S45C	M8 X L20				7
2	COVER+BOX HEX BOLT	S45C	M6 X L70				6
2	COVER+BOX HEX BOLT	S45C	M6 X L30				5
1	BOX GASKET	NBR	--				4
1	O-RING / COVER	EPDM	ø2.5				3
1	CONDUIT BOX COVER	AL	--				2
1	CONDUIT BOX	AL	--				1
Q'TY	DESCRIPTION	MATERIAL	DIMENSION	WEIGHT	PART NO.	REMARK	NO.
APPD BY	S.K.HAN	UNIT	mm	SUBJECT	SSEN SERIES 160-200FR		DWG SIZE
CHKD BY	I.K.KIM	SCALE	1/1	TITLE		A3 (1:1.5)	
CHKD BY	-	PROJEC'N	3rd Angle				
DSND BY	이승호	DATE	2020-06-19				
				REF. NO	Sheet No. of		
				DWG NO	3M-234757		Revision No. 0